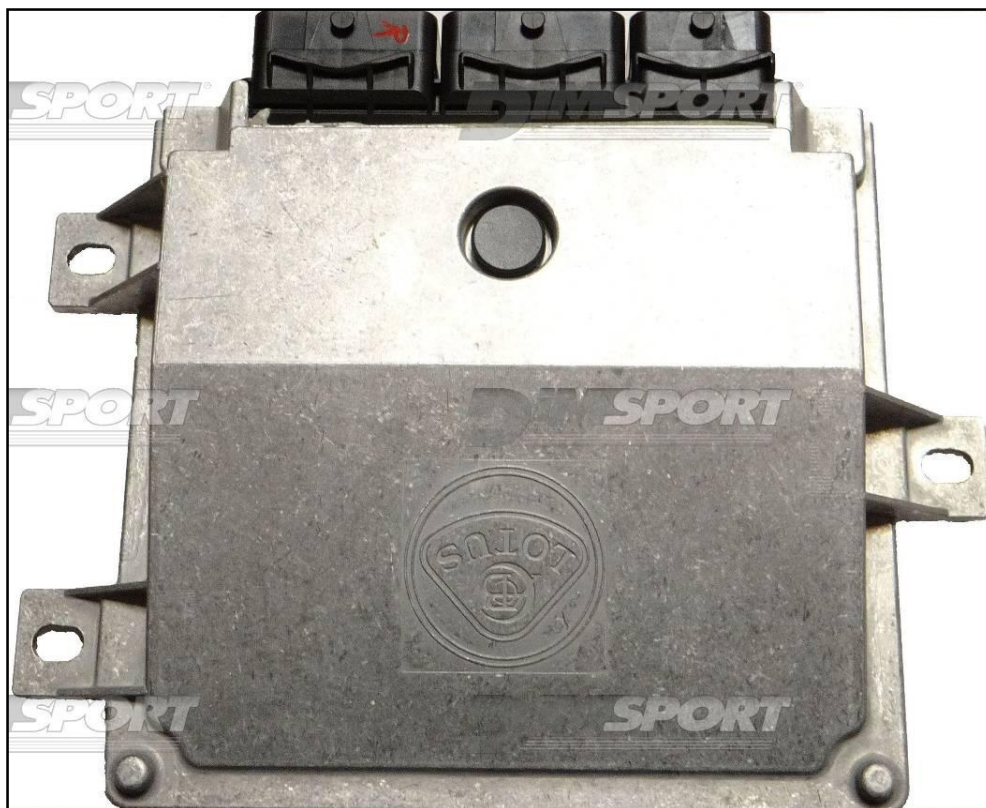
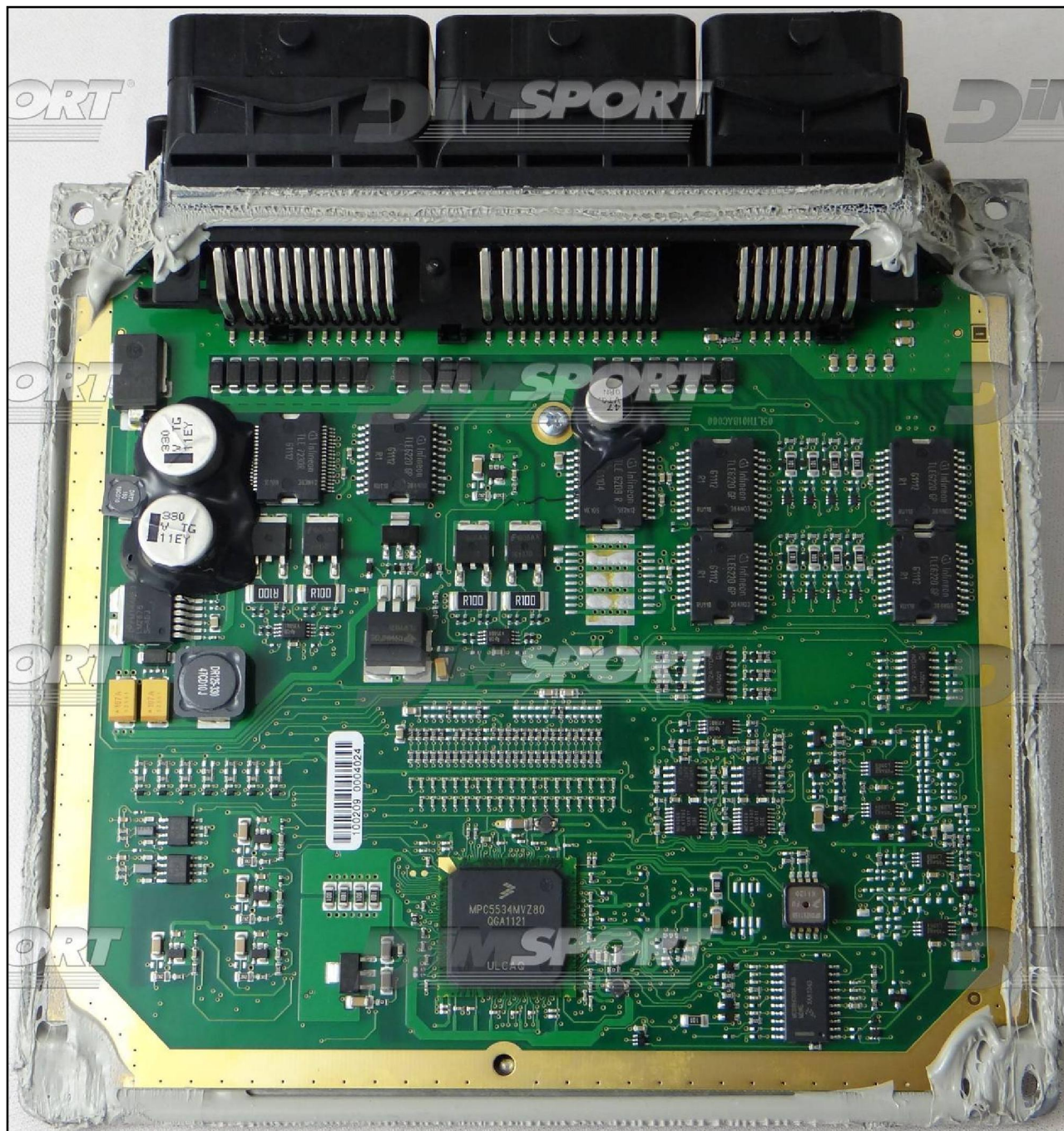


EFI T6 MPC5534 LOTUS

plugin **507-1183**



EFI T6 MPC5534 LOTUS



EFI T6 MPC5534 LOTUS



EFI T6 MPC5534 LOTUS

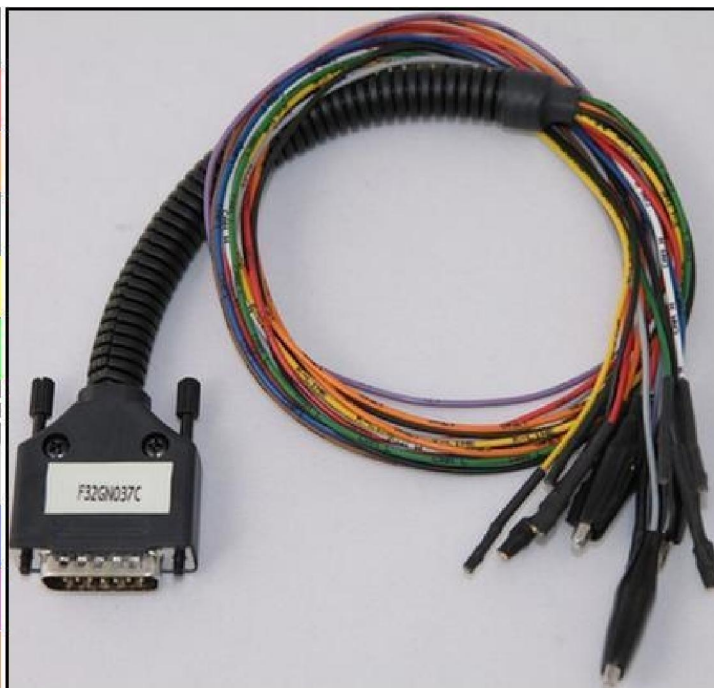
DIRECT CONNECTION

In order to connect to the ECU use the CABLE F32GN037C.

Make sure that the POWER led (red) on Trasdata is ON.

Use the same connection with the DIMA F34DM022.

COLORE FILO WIRE COLOUR	DESCRIZIONE DESCRIPTION
ROSSO RED	POSITIVO DIRETTO POWER BATTERY
ARANCIO ORANGE	POSITIVO SOTTO QUADRO POWER SWITCH ON
NERO BLACK	MASSA GND
GIALLO YELLOW	KLINE
VERDE GREEN	CAN LOW
BIANCO WHITE	CAN HIGH
GRIGIO GREY	POL4 BOOT
BLU BLUE	POL5 CNF1
VIOLA/GRIGIO PURPLE/GREY	TENSIONE PROG. PROG. VOLTAGE
MARRONE BROWN	RESET





ECU CONNECTOR



EFI T6 MPC5534 LOTUS

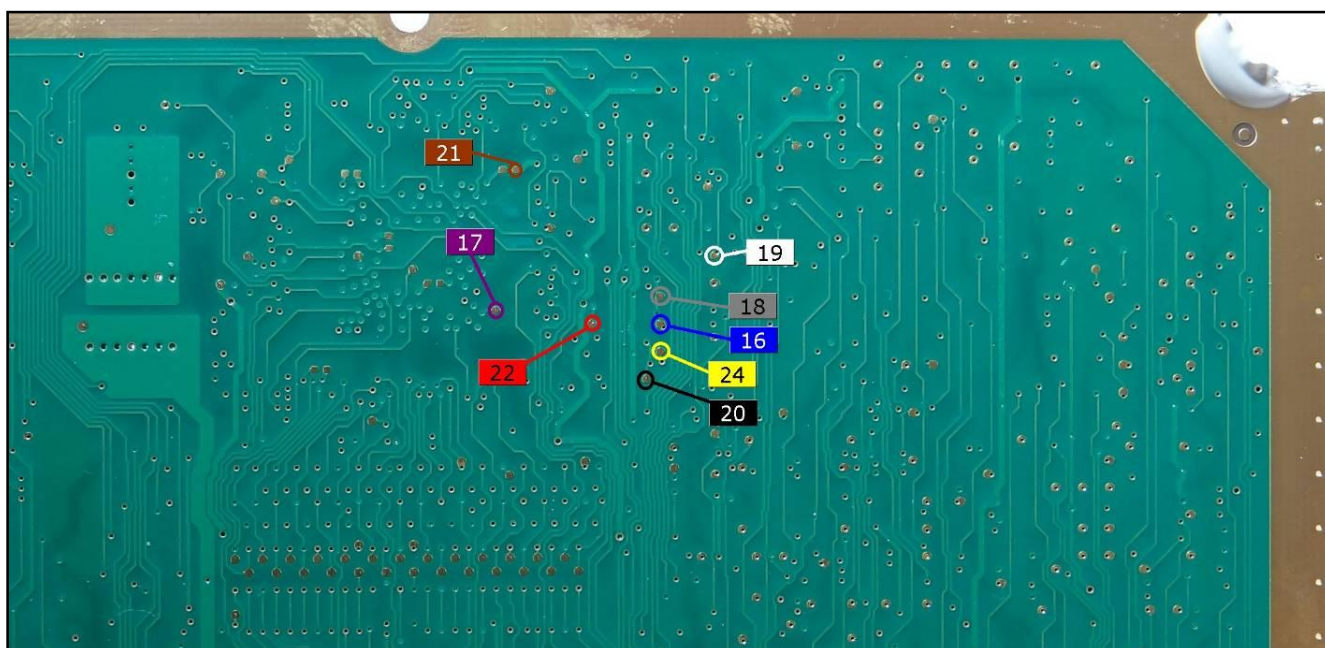
J-TAG FREE WIRING CONNECTION

Connect the F34NTF53 wiring as explained here below:

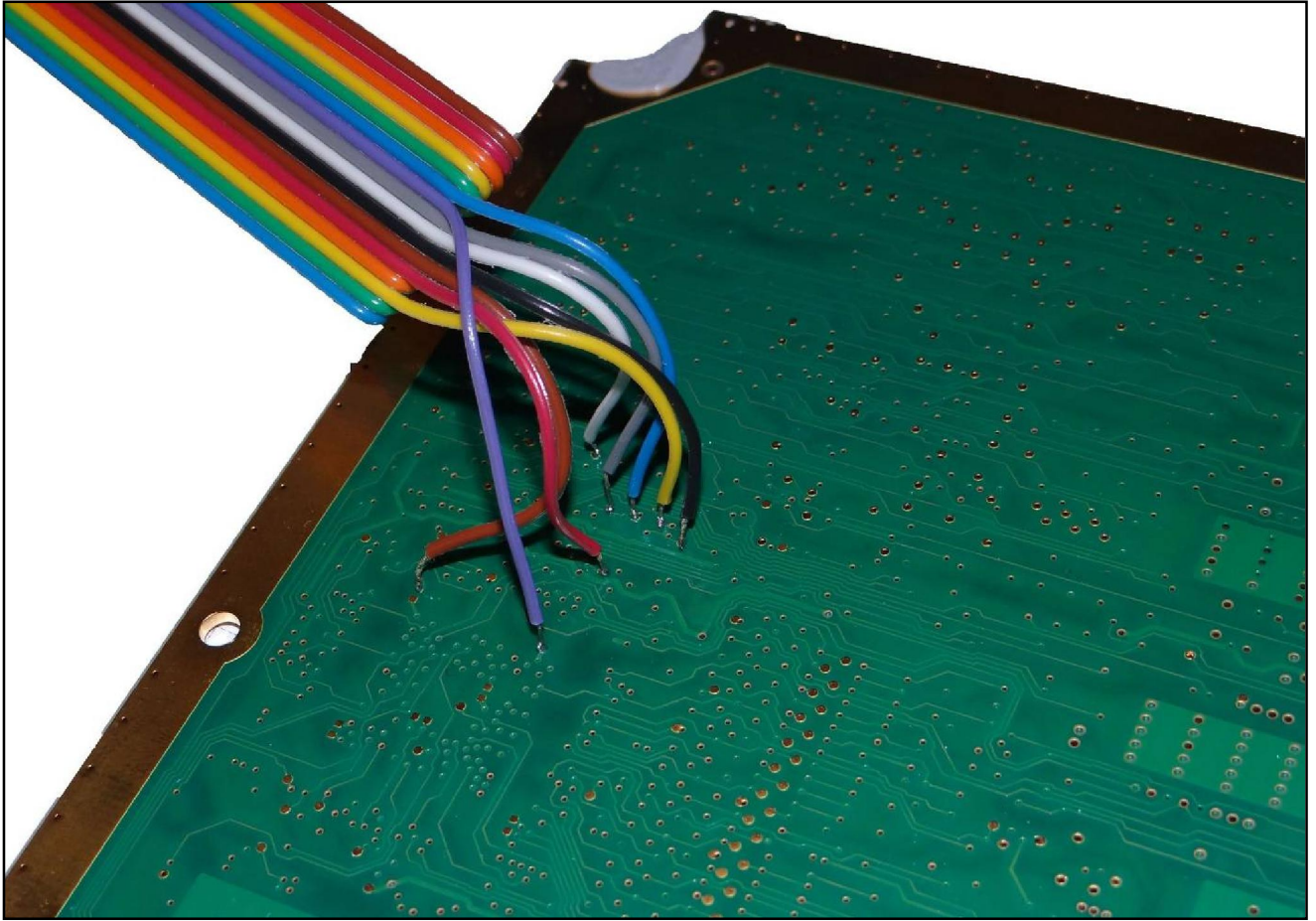


Pin	Colore Colour
11	Non usato Not used
12	Non usato Not used
13	Non usato Not used
14	Non usato Not used
15	GND
16	Blu Blue
17	Viola Violet
18	Grigio Grey
19	Bianco White
20	Nero Black
21	Marrone Brown
22	Rosso Red
23	Non usato Not used
24	Giallo Yellow
25	Non usato Not used
26	Non usato Not used

Please avoid short circuits while soldering the wires on the pads



EFI T6 MPC5534 LOTUS



EFI T6 MPC5534 LOTUS

F34DM022 DIMA CONNECTION

